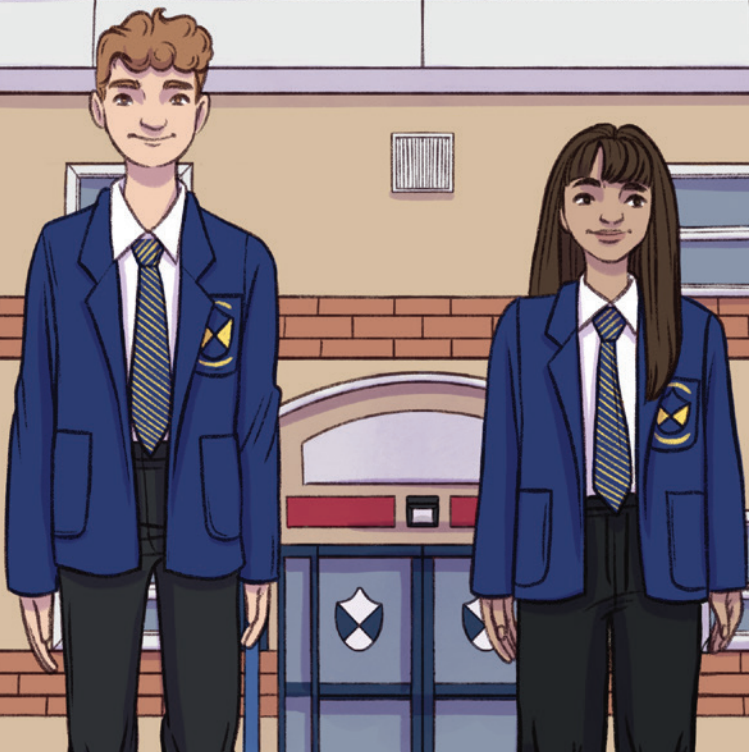


Welcome to Rhosnesni High School

Respect, honesty, success



YSGOL RHOSNESNI
HIGH SCHOOL



Your Pocket Guide

What do I wear for my first day?

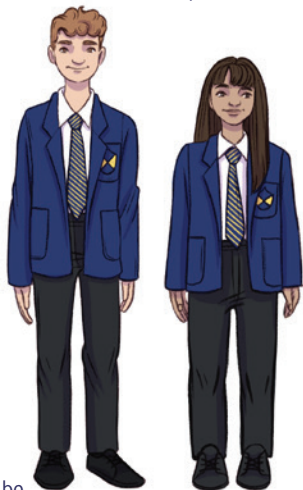
We have high standards at Rhosnesni High School, so it is important to wear the correct uniform every day from your first day.

- **Blue blazer** – plain school style blazer with school badge on the chest pocket. This is a compulsory item to be worn at all times on the school premises.
- **School tie** – approved school clip-on ties only – blue and yellow stripes.
- **Plain white shirt** – long- or short-sleeved collared shirt with all buttons fastened and the shirt tucked properly in at the waist.
- **Black 'V' neck jumper (optional)** – not compulsory but is the only acceptable garment if an additional layer is required over a shirt and under a blazer.
- **Plain black trousers** – Regular cut, full-length trousers.
- **Plain black skirt*** – 'A' line or pleated knee-length skirt.
- **Black tights** – plain opaque black tights only.
- **Black socks** – only plain black socks can be worn – no trainer style, over-the-knee or knee-high socks.
- **Black shoes** – plain black traditional formal style leather or leather style shoes.

*There is currently a consultation period in relation to the proposal to remove skirts from Rhosnesni school uniform from September 2025 - this is subject to change.

Outdoor clothing – Coats should be suitable for school: warm and waterproof. They should not be worn inside the school building.

Jewellery is not permitted, except for a single stud earring in each ear and a conventional wristwatch.



What equipment will I need?

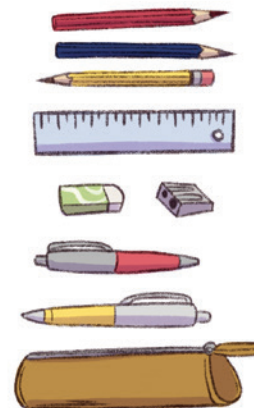
You need to bring the following items to school every day:

- Pencil case
- Pens
- Pencils

You should pack your belongings in a strong, reasonably sized school bag.

It is a good idea to pack your bag the night before and then re-check it in the morning to make sure you don't forget anything.

We would prefer that you do not bring electronic equipment such as mobile phones into school. If you do choose to bring your mobile phone into school, it must be switched off and kept in your bag.



What happens on my first day?

You will have already come to see us for two transition days at the end of the summer term when you will have met some of the other new Year 7s and got to know some of your teachers. This will also have been a great opportunity for you to start finding your way around the school and will hopefully make your first day feel less daunting.

The first part of your first day will be spent finding out about your timetable and getting to know your Form Tutor. You will also do some activities with the rest of your form to help you all get to know each other a bit better. In the afternoon, you will go to your normal timetabled lessons.

First day timetable:

8.30am	Arrive at school
8.45am-11.05am	Time in form class exploring your timetable and getting to know staff
11.05am-11.20am	Break
11.20am-12.20pm	Time in form class completing transition activities
12.20pm-1.00pm	Lunch
1.00pm-2.00pm	Lesson
2.00pm-3.00pm	Lesson



We know that you may be a bit nervous when you join us, so you will get lots of support to ensure you settle in quickly and confidently.

What happens in a school day?

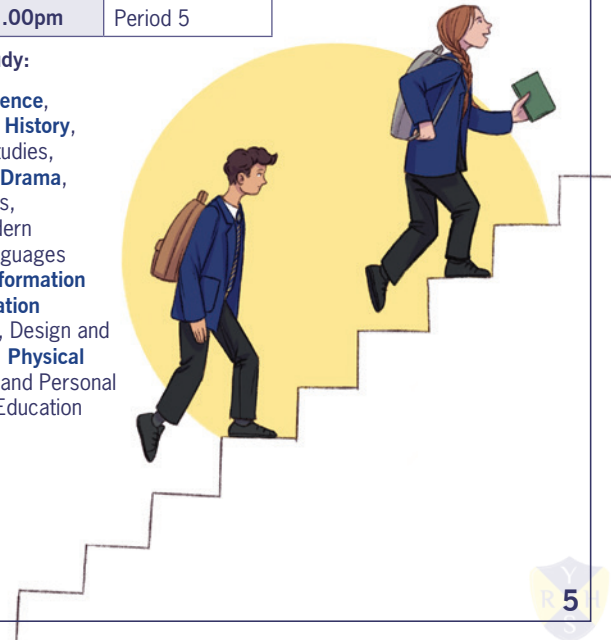
Each day there are five one-hour lessons, form time, break and lunch.

8.45am-9.45am	Period 1
9.45am-10.45am	Period 2
10.45am-11.05am	Form time
11.05am-11.20am	Break
11.20am-12.20pm	Period 3
12.20pm-1.00pm	Lunch
1.00pm-2.00pm	Period 4
2.00pm-3.00pm	Period 5

You will be in different classrooms for lessons but will soon get used to finding your way around. Everyone will be happy to help, so just ask an older student or a teacher if you get lost.

You will study:

English, **Science**, Geography, **History**, Religious Studies, **Art**, Music, **Drama**, Mathematics, **Welsh**, Modern Foreign Languages (French), **Information Communication Technology**, Design and Technology, **Physical Education**, and Personal and Social Education



Frequently asked questions

What time do I need to arrive at school?

You will need to be on the school site for 8.40am each day.

Where should I go on the first day of school?

School staff will be there to meet you at the front gate. They will direct you to where you need to go, and Peer Mentors will also be there to help you find your way.

Will I need my PE kit on the first day?

No, the first PE lesson will not involve changing into kit.

How will I find my way around school?

You will be given a map of the school buildings, and school staff will always be on hand to help direct you if you get lost.

Will I be in a form with others that I know from primary school?

Wherever possible, you will be placed in a form with at least one other student from your primary school.



What happens if I am unwell when I'm at school?

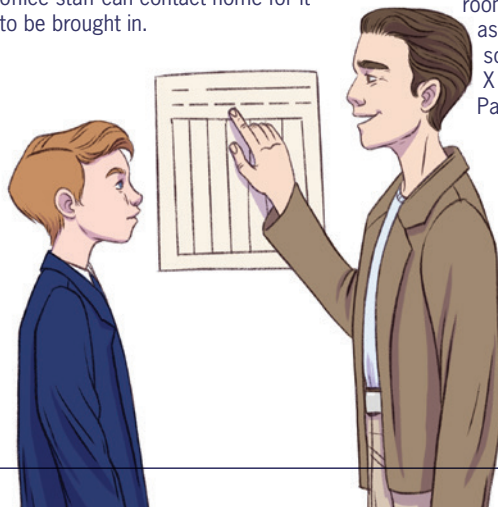
If you are ill, you will be sent to the Medical Room where trained first aiders will assess how you are. If needed, a member of staff will call your parents/carers.

How do I pay for school dinners?

You will have an account set up to use the school's cashless system so you will not need to bring any money into school.

What if I forget something?

Your teachers will be understanding in the early weeks of the term. If you forget something important, the office staff can contact home for it to be brought in.



How much homework will I get?

It may vary a little but expect a few pieces of homework a night on average.

What if I am unhappy about something?

You can speak to your Form tutor or any member of staff. The staff at Rhosnesni High School are extremely welcoming. They will be happy to discuss any issues with you and will support you as much as possible.

Where can I find out about extra-curricular clubs?

Information will be available in tutor rooms, shared in assemblies or on the school website, via X (Twitter) and on our Parent App.

Key contacts

You can speak to any member of staff but the best people to speak to will be your Form Tutor, the Pastoral Support Team or:

Mr M Platt

Year 7 Transition Co-ordinator/Pastoral Support

Head of Year 7

Mr C Whitney-Lang

Assistant Headteacher, Pastoral for KS3



YSGOL RHOSNESNI
HIGH SCHOOL

Rhosnesni High School, Rhosnesni Lane, Wrexham, LL13 9ET

Tel: 01978 340840 - Email: mailbox@rhosnesni-high.wrexham.sch.uk

Website: www.rhosnesni-high.wrexham.sch.uk

Devised and produced by Stoneworks Education Ltd www.stoneworkseducation.co.uk